

Note: TCP to allow access to driveways

Note: Distances shortened due to lack of available space

NOTES:

- Description & Location:** Focus Communications will access Utility poles P-1 and P-2 and string cable across Knight Road between them. The service vehicles will occupy the shoulders of the road as shown. Traffic will be stopped for not more than 3 minutes by the TCP's while the cable is lifted into place. If more than one stoppage is required, any traffic queues that have formed will be allowed to clear completely before another stoppage.
- The North exit from 45788 will be closed leaving the entrance on Shaw Avenue open. The business at 45788 is to be notified of the works not less than 24 hours before commencement. The works will be carried out between the hours of 9:30am and 3:00pm. This will require a Temporary No Parking Permit on the South side of Knight Road in front of 45788.
- The traffic control will be provided by 2 TCP's and 2 Lane Closure Vehicles (LCV) with mounted Flashing Arrow Board.
- Traffic at this location is restricted to 50 km/h.
- Sign location and spacing will be in conformity with the requirements of the Manual for Work on Roadways (1999) as published by the MoTI. Changes to layout of signage may be made by the TCP in charge to accommodate traffic and local conditions on site at the time.

- LEGEND**
- TRAFFIC CONTROL PERSON
 - UTILITY MANHOLE
 - TRAFFIC CONE TYPE 'D'
 - TRAFFIC SIGN LOCATION
 - LANE CLOSURE TRUCK
 - TRUCK MOUNTED FAB

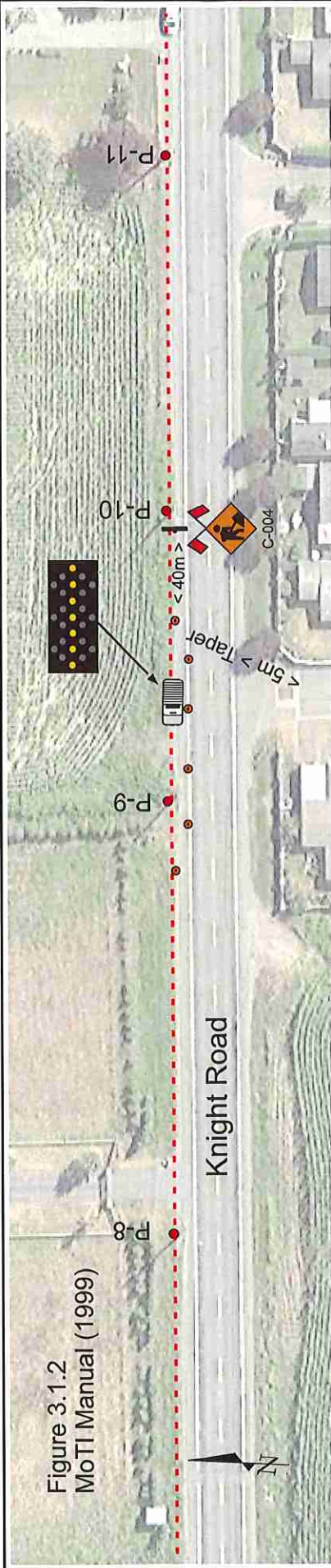
	Ansan Industries Ltd. 2600 Viking Way, Richmond, British Columbia V6V 4N2	
	No: 17-1032 D	Customer: Focus Communications
Date: 31 Jan 2017	Contact: Parveen Agganwal	Tel: 604-783-9298
Title:	Utility Pole P-1 and P-2 Access - Network #2616320C Knight Road Chilliwack, British Columbia	
Traffic Tech: Flynn Marr	Dwg By: R. Flynn Marr	B.Sc.(Eng)
File: Plan 17-1032 D.cdr		

NOTE: this Traffic Plan is not an order of TCP's or equipment. It is the Contractor's responsibility to order the necessary assets at least 24 hours prior to the intended start time of the works.

NOTE: A Temporary "No Parking" permit will be required on the South side of Knight Road in front of 45788 Knight Road. See Notes.

This Traffic Plan has been prepared by Ansan Industries Ltd. (Ansan) based, in part, on information provided by third parties. Every effort has been made to ensure that the plan conforms to the requirements of the Motor Vehicle Act (RSBC 1966) Chapter 318 and Regulations and to the BC Traffic Control Manual. Ansan assumes no responsibility for the uses to which this plan is put by third parties not directly under the supervision of Ansan or its agents.

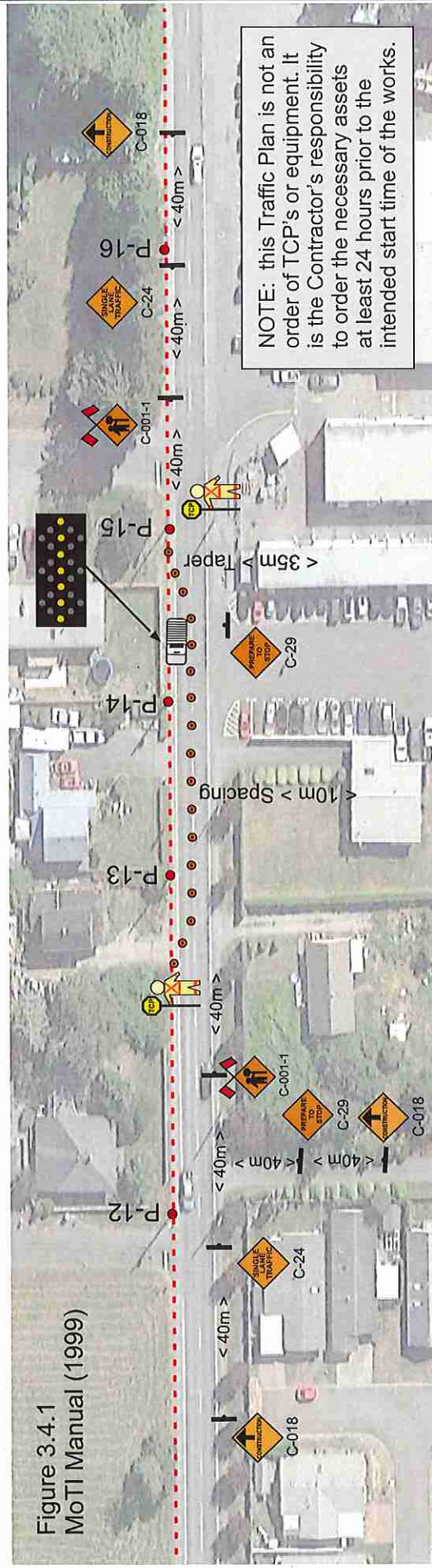
Figure 3.1.2
MoTI Manual (1999)



NOTES:

1. **Description & Location:** Focus Communications will access Utility poles P-2 thru P-16 along the North side of Knight Road between the railway tracks East of Shaw Avenue to Chilliwack River Road. For most of the poles there is sufficient room on the shoulder to apply Figure 3.1.2 of the MoTI Manual (1999) as above. This shall be done wherever possible. Driveways are to be kept open at all times.

Figure 3.4.1
MoTI Manual (1999)



NOTES:

- Description & Location:** Focus Communications will access Utility Poles along the North side of Knight Road between the railway tracks East of Shaw Avenue to Chilliwack River Road. For most of the poles there is sufficient room on the shoulder to apply Figure 3.1.2 of the MoTI Manual (1999) as above. This shall be done wherever possible. Driveways are to be kept open at all times. If there is not sufficient room on the shoulder the TCP's shall operate traffic in "Single Lane Alternating" mode as shown in Figure 3.4.1. Driveways shall be kept open and arrangements made for vehicles to pass through the work zone safely. Side streets shall be signed as needed as shown. The works will be carried out between the hours of 9:30am and 3:00pm.
- The traffic control will be provided by 2 TCP's and 1 Lane Closure Vehicles (LCV) with mounted Flashing Arrow Board.
- Traffic at this location is restricted to 50 km/h.
- Sign location and spacing will be in conformity with the requirements of the Manual for Work on Roadways (1999) as published by the MoTI. Changes to layout of signage may be made by the TCP in charge to accommodate traffic and local conditions on site at the time.

This Traffic Plan has been prepared by Ansan Industries Ltd. (Ansan) based, in part, on information provided by third parties. Every effort has been made to ensure that the plan conforms to the requirements of the Motor Vehicle Act [RSBC 1966] Chapter 318 and Regulations and to the BC Traffic Control Manual. Ansan assumes no responsibility for the uses to which this plan is put by third parties not directly under the supervision of Ansan or its agents.

LEGEND

- TRAFFIC CONTROL PERSON
- UTILITY MANHOLE
- TRAFFIC CONE TYPE 'D'
- TRAFFIC SIGN LOCATION
- LANE CLOSURE TRUCK
- TRUCK MOUNTED FAB



Ansan Industries Ltd.
2600 Viking Way, Richmond,
British Columbia V6V 1N2

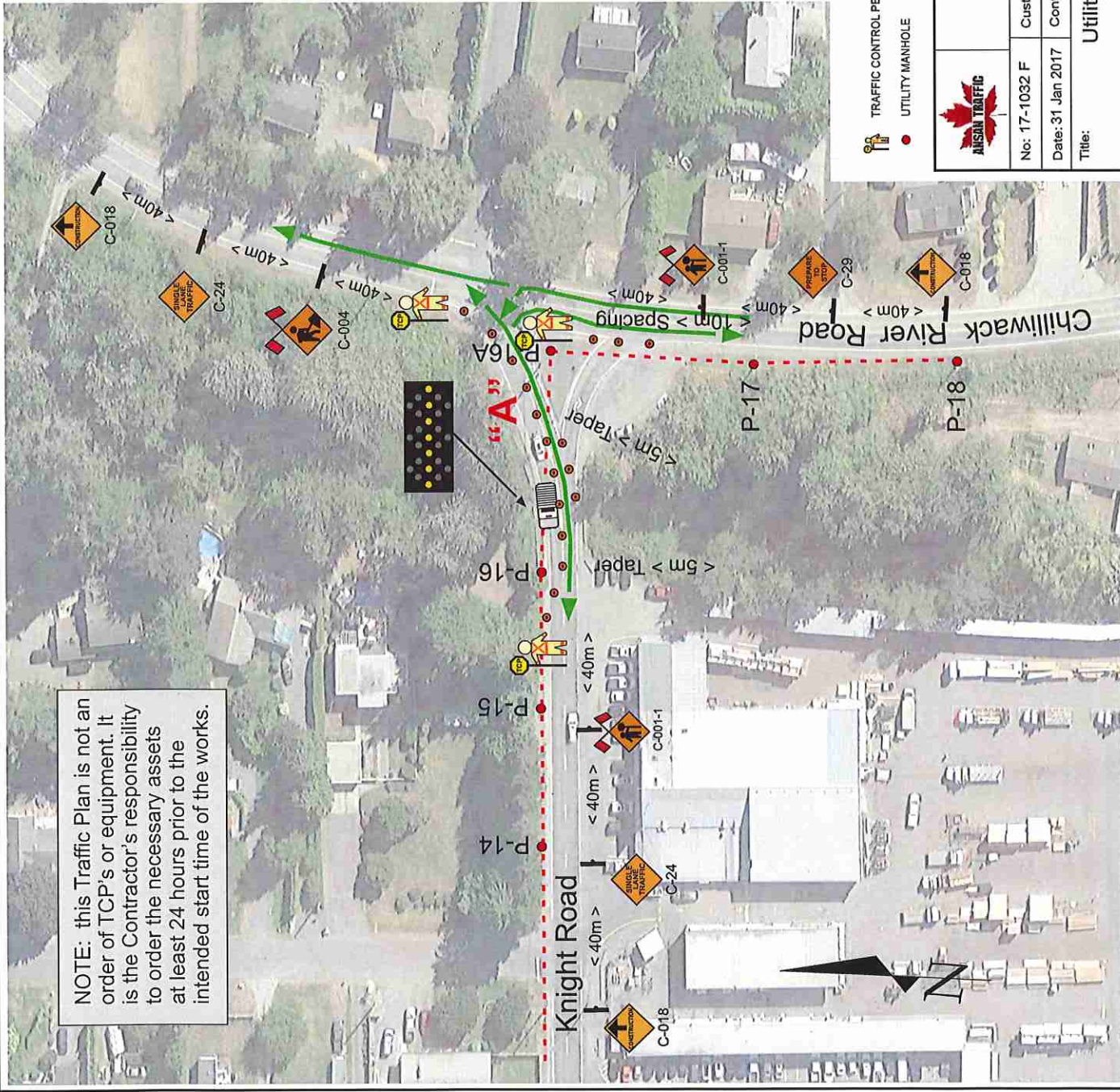
Customer: Focus Communications

Contact: Parveen Agganwal Tel: 604-783-9298

Title: Utility Pole Access - Network #2616320C
Knight Road
Chilliwack, British Columbia

Traffic Tech: Flynn Marr
Dwg By: R. Flynn Marr B.Sc.(Eng)
File: Plan 17-1032 E.cdr

NOTE: this Traffic Plan is not an order of TCP's or equipment. It is the Contractor's responsibility to order the necessary assets at least 24 hours prior to the intended start time of the works.



LEGEND

	TRAFFIC CONTROL PERSON		TRAFFIC CONE TYPE 'D'		LANE CLOSURE TRUCK
	UTILITY MANHOLE		TRAFFIC SIGN LOCATION		TRUCK MOUNTED FAB

	Ansan Industries Ltd. 2600 Viking Way, Richmond, British Columbia V6V 1N2	
	No: 17-1032 F	Customer: Focus Communications
Date: 31 Jan 2017	Contact: Parveen Aggarwal	Tel: 604-783-9298
Title:	Utility Pole Access - Network #2616320C Knight Road and Chilliwack River Road Chilliwack, British Columbia	
Traffic Tech: Flynn Marr	Dwg By: R. Flynn Marr	B.Sc.(Eng)
File: Plan 17-1032 F.cdr		

NOTES:

- Description & Location:** Focus Communications will access Utility Poles along the North side of Knight Road between the railway tracks East of Shaw Avenue to Chilliwack River Road. At Chilliwack River Road cables will be strung over the roadway from Pole P-16 to P-16A to P-17. The right turn onto Chilliwack River Rd. will be closed allowing cable to be lifted from P-16A to P-17. At P-16 a "Single Lane Alternating" arrangement is created. The TCP at the intersection will assist vehicles turning into or out of Chilliwack River Rd. To lift the cable at "A" the three TCP's will simultaneous stop traffic from all directions for a maximum of three minutes. If subsequent stoppages are required all traffic queues must clear before the next stoppage. Driveways shall be kept open and arrangements made for vehicles to pass through the work zone safely. The works will be carried out between the hours of 9:30am and 3:00pm. The traffic control will be provided by 3 TCP's and 1 Lane Closure Vehicles (LCV) with mounted Flashing Arrow Board. Traffic at this location is restricted to 50 km/h. Sign location and spacing will be in conformity with the requirements of the Manual for Work on Roadways (1999) as published by the MoTI. Changes to layout of signage may be made by the TCP in charge to accommodate traffic and local conditions on site at the time.

This Traffic Plan has been prepared by Ansan Industries Ltd. (Ansan) based, in part, on information provided by third parties. Every effort has been made to ensure that the Plan conforms to the requirements of the Motor Vehicle Act [RSBC 1986] Chapter 318 and Regulations and to the BC Traffic Control Manual. Ansan assumes no responsibility for the uses to which this plan is put by third parties not directly under the supervision of Ansan or its agents.

NOTE: A Temporary "No Parking" permit will be required on the South side of Knight Road in front of 45788. See Notes.

NOTE: this Traffic Plan is not an order of TCP's or equipment. It is the Contractor's responsibility to order the necessary assets at least 24 hours prior to the intended start time of the works.

NOTES:

1. Description & Location: Focus Communications will access Service Vault 420 located in the road in front of 45788 Knight Road. The service vehicle will occupy the parking lane and traffic on Knight Road will be unaffected. The North exit from 45788 will be closed leaving the entrance on Shaw Avenue open. The business at 45788 is to be notified of the works not less than 24 hours before commencement.

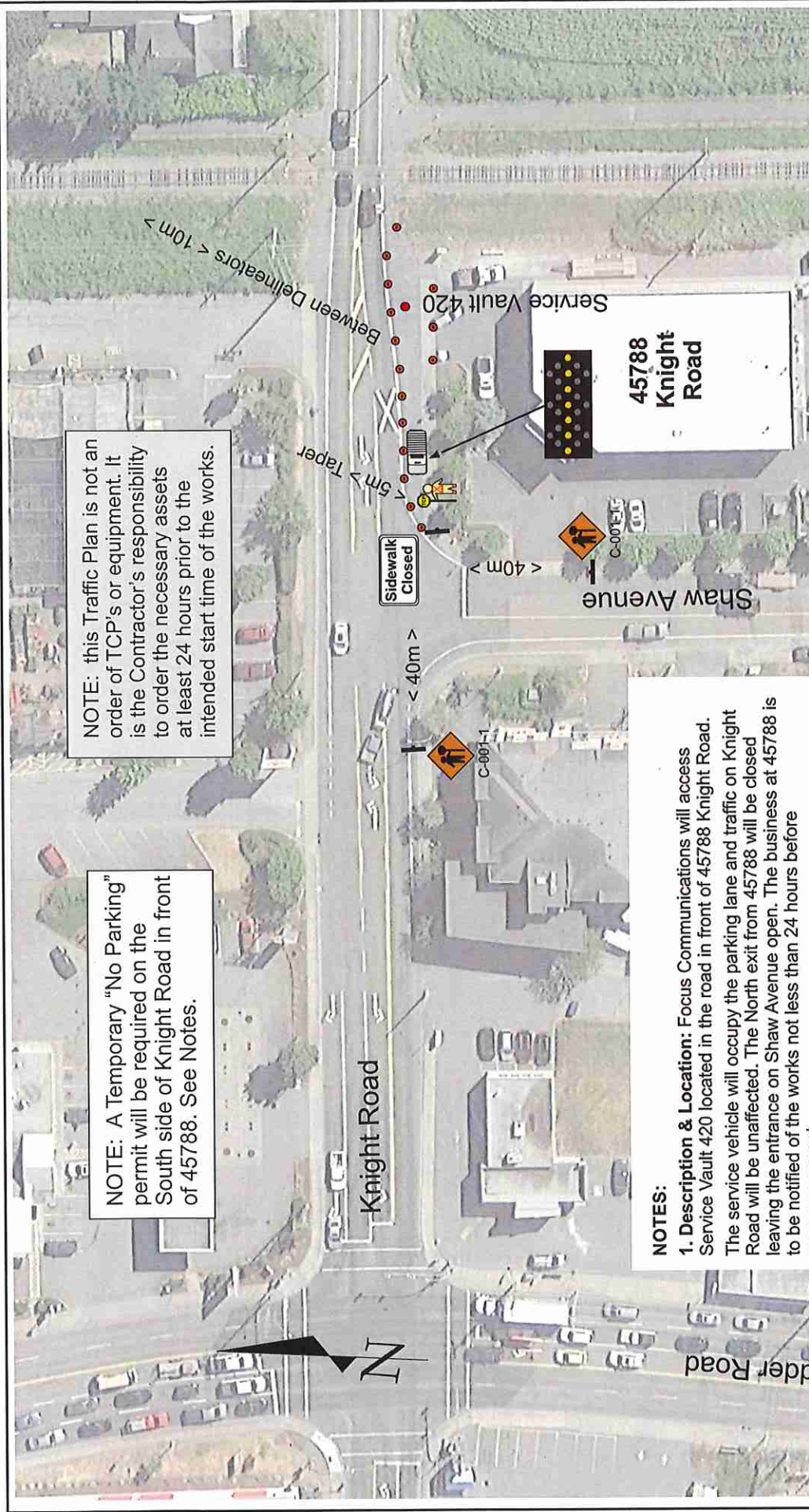
The works will be carried out between the hours of 9:30am and 3:00pm.

This will require a Temporary No Parking Permit on the South side of Knight Road in front of 45788.

2. The traffic control will be provided by 1 TCP and 1 Lane Closure Vehicle (LCV) with mounted Flashing Arrow Board. The traffic setup is taken from Figure 3.1.2 of the MoTI Manual

3. Traffic at this location is restricted to 50 km/h.

4. Sign location and spacing will be in conformity with the requirements of the Manual for Work on Roadways (1999) as published by the MoTI. Changes to layout of signage may be made by the TCP in charge to accommodate traffic and local conditions on site at the time.



LEGEND

- TRAFFIC CONTROL PERSON
- TRAFFIC CONE TYPE 'D'
- LANE CLOSURE TRUCK
- UTILITY MANHOLE
- TRAFFIC SIGN LOCATION
- TRUCK MOUNTED FAB

	Ansan Industries Ltd. 2600 Viking Way, Richmond, British Columbia V6V 1N2	
	Customer: Focus Communications	Dwg By: R. Flynn Marr B.Sc.(Eng)
No: 17-1032 B	Contact: Parveen Aggarwal	Tel: 604-783-9298
Date: 31 Jan 2017	Title: Utility Service Vault 420 Access - Network #2616320C Shaw Avenue at Knight Road Chilliwack, British Columbia	
Traffic Tech: Flynn Marr	File: Plan 17-1032 B.cdr	

This Traffic Plan has been prepared by Ansan Industries Ltd. (Ansan) based, in part, on information provided by third parties. Every effort has been made to ensure that the plan conforms to the requirements of the Motor Vehicle Act [RSBC 1986] Chapter 318 and Regulations and to the BC Traffic Control Manual. Ansan assumes no responsibility for the uses to which this plan is put by third parties not directly under the supervision of Ansan or its agents.



NOTE: this Traffic Plan is not an order of TCP's or equipment. It is the Contractor's responsibility to order the necessary assets at least 24 hours prior to the intended start time of the works.

NOTES:

1. Description & Location: Focus Communications will access Utility Poles P-17 and P-18 located in the grass boulevard beside Chilliwack River Road at Knight Road.

The service vehicle will occupy the shoulder and grass and traffic on Chilliwack River Road will be unaffected. The setup is the same for both P-17 and P-18

The works will be carried out between the hours of 9:30am and 3:00pm.

2. The traffic control will be provided by 1 TCP and 1 Lane Closure Vehicle (LCV) with mounted Flashing Arrow Board. The traffic setup is taken from Figure 3.1.2 A of the MoTI Manual

3. Traffic at this location is restricted to 50 km/h.

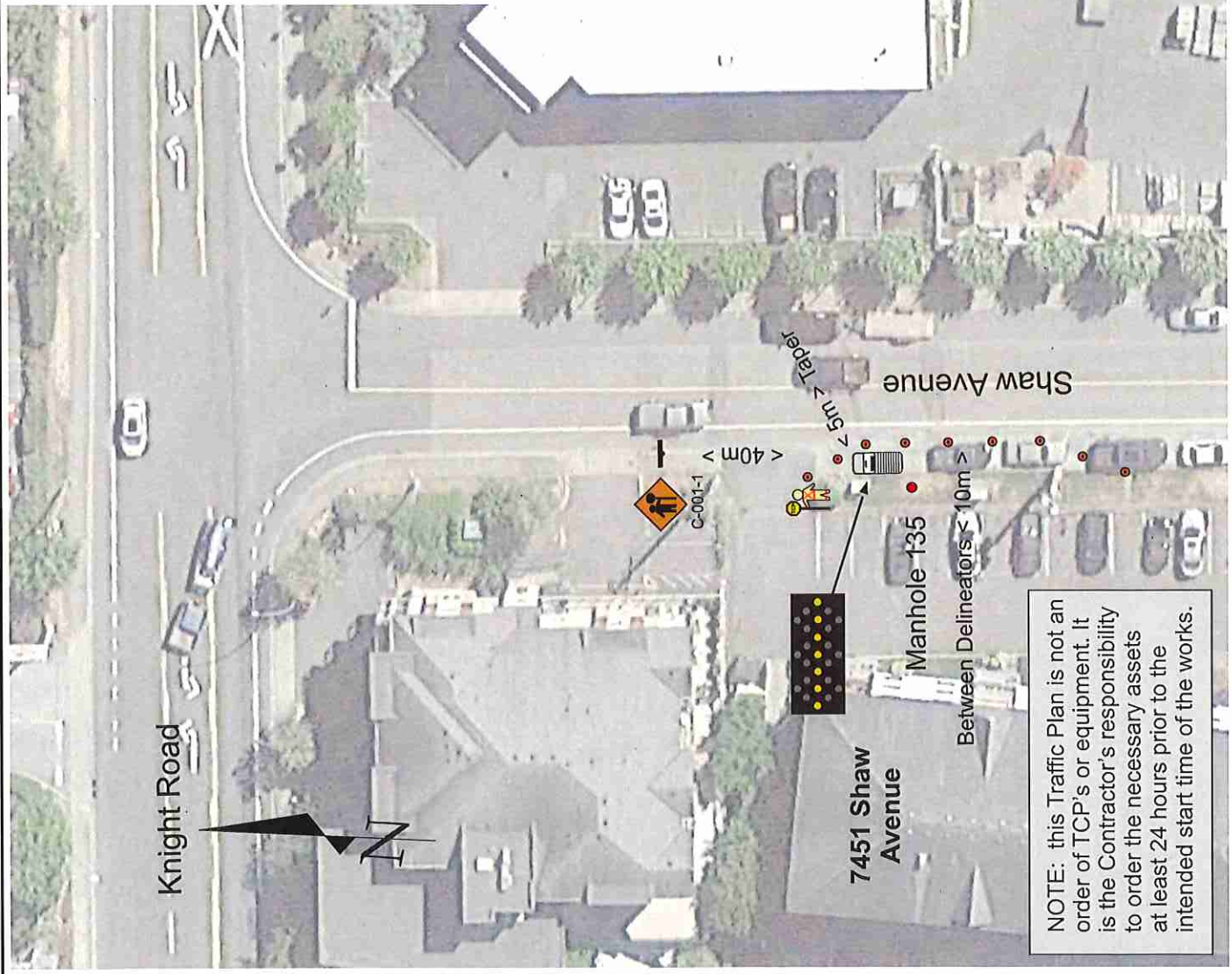
4. Sign location and spacing will be in conformity with the requirements of the Manual for Work on Roadways (1999) as published by the MoTI. Changes to layout of signage may be made by the TCP in charge to accommodate traffic and local conditions on site at the time.

LEGEND

- TRAFFIC CONTROL PERSON
- UTILITY POLE
- TRAFFIC CONE
- TRAFFIC SIGN LOCATION
- LANE CLOSURE TRUCK
- TRUCK MOUNTED FAB

	Ansan Industries Ltd. 2600 Viking Way, Richmond, British Columbia V6V 1N2	
	Customer: Focus Communications	Contact: Parveen Agganwal Tel: 604-783-9298
No: 17-1032 G	Date: 31 Jan 2017	Title: Utility Manhole 419 Access - Network #2616320C Chilliwack River Road Chilliwack, British Columbia
Traffic Tech: Flynn Marr	Dwg By: R. Flynn Marr	B.Sc.(Eng)
File: Plan 17-1032 G.cdr		

This Traffic Plan has been prepared by Ansan Industries Ltd. (Ansan) based, in part, on information provided by third parties. Every effort has been made to ensure that the plan conforms to the requirements of the Motor Vehicle Act [RSBC 1986] Chapter 318 and Regulations and to the BC Traffic Control Manual. Ansan assumes no responsibility for the uses to which this plan is put by third parties not directly under the supervision of Ansan or its agents.



NOTE: this Traffic Plan is not an order of TCP's or equipment. It is the Contractor's responsibility to order the necessary assets at least 24 hours prior to the intended start time of the works.

NOTE: A Temporary "No Parking" permit will be required on the West side of Shaw Avenue. See the Notes.

NOTES:

1. **Description & Location:** Focus Communications will access Utility Manhole 135 located in the grass boulevard beside the parking lane in front of 7451 Shaw Avenue, Chilliwack, B.C.
The service vehicle will occupy the parking lane and traffic on Shaw Avenue will be unaffected. The works will be carried out between the hours of 9:30am and 3:00pm.
This will require a Temporary No Parking Permit on the West side of Shaw Avenue in front of 7451.
2. The traffic control will be provided by 1 TCP and 1 Lane Closure Vehicle (LCV) with mounted Flashing Arrow Board. The traffic setup is taken from Figure 3.1.2 of the MoTI Manual
3. Traffic at this location is restricted to 50 km/h.
4. Sign location and spacing will be in conformity with the requirements of the Manual for Work on Roadways (1999) as published by the MoTI. Changes to layout of signage may be made by the TCP in charge to accommodate traffic and local conditions on site at the time.

LEGEND

- TRAFFIC CONTROL PERSON
- UTILITY MANHOLE
- TRAFFIC CONE
- TRAFFIC SIGN LOCATION
- LANE CLOSURE TRUCK
- TRUCK MOUNTED FAB

	Ansan Industries Ltd. 2600 Viking Way, Richmond, British Columbia V6V 1N2	
	No: 17-1032 A	Customer: Focus Communications
Date: 30 Jan 2017	Contact: Parveen Agganwal	Tel: 604-783-9298
Title: Utility Manhole 419 Access - Network #2616320C Shaw Avenue at Knight Road Chilliwack, British Columbia		
Traffic Tech: Flynn Marr	Dwg By: R. Flynn Marr	B.Sc.(Eng)
File: Plan 17-1032 A.cdr		

This Traffic Plan has been prepared by Ansan Industries Ltd. (Ansan) based, in part, on information provided by third parties. Every effort has been made to ensure that the plan conforms to the requirements of the Motor Vehicle Act (RSBC 1966) Chapter 318 and Regulations and to the BC Traffic Control Manual. Ansan assumes no responsibility for the uses to which this plan is put by third parties not directly under the supervision of Ansan or its agents.